

LM26400Y Demonstration Board

National Semiconductor
Application Note 1600
Dongbing Zhang
March 2007



Introduction

The LM26400Y demonstration board was designed to provide two 2A outputs at 1.2V and 2.5V respectively. It uses the ETSSOP package option of the LM26400Y for easier probing. The design emphasizes on the compactness of the LM26400Y PCB layout and is thermally optimized. The total solution size is about 20mm by 30mm. The board supports the conversion from an input voltage ranging from 5V to 20V down to output voltages of 1.2V and 2.5V. With the availability of a separate 5V rail and a couple of small bootstrap diodes, the board also supports an input voltage down to 3.3V with 2A output currents. The EN pins are pulled up to VIN by default for easy evaluation but can also be easily controlled by external logic.

The board also has two small C_{FF} capacitors (C12 and C13) installed for improved load step response and elimination of output voltage overshoot after a short-circuit release.

The board's specifications are:

- Input Voltage: 5V to 20V
- Output Voltages: 1.2V and 2.5V
- Maximum load current: 2A/output
- Minimum load current: 0A
- Peak Current Limit: $\approx 3A$ at 25°C
- Measured Efficiency: 83% ($V_{IN} = 5V$, $I_{OUT2} = 2A$)
- Nominal Switching Frequency: 520 kHz
- Size: 2 in. x 2 in.

Powering Up The Board

Since the EN pins are directly tied to the input voltage, starting up the board is a single-step procedure. Simply connect a voltage rail between 5V and 20V to the VIN and GND termi-

nals and there should be 1.2V and 2.5V output at the corresponding terminals. Certain bench-top power supplies upon powering up may shoot up to their maximum output voltages momentarily before settling to the programmed value. If their maximum voltage is above 22V, it can damage the LM26400Y demonstration board. In this case, either connect the board after the input power supply is powered up, or use the current limit knob of the power supply to bring up the input voltage.

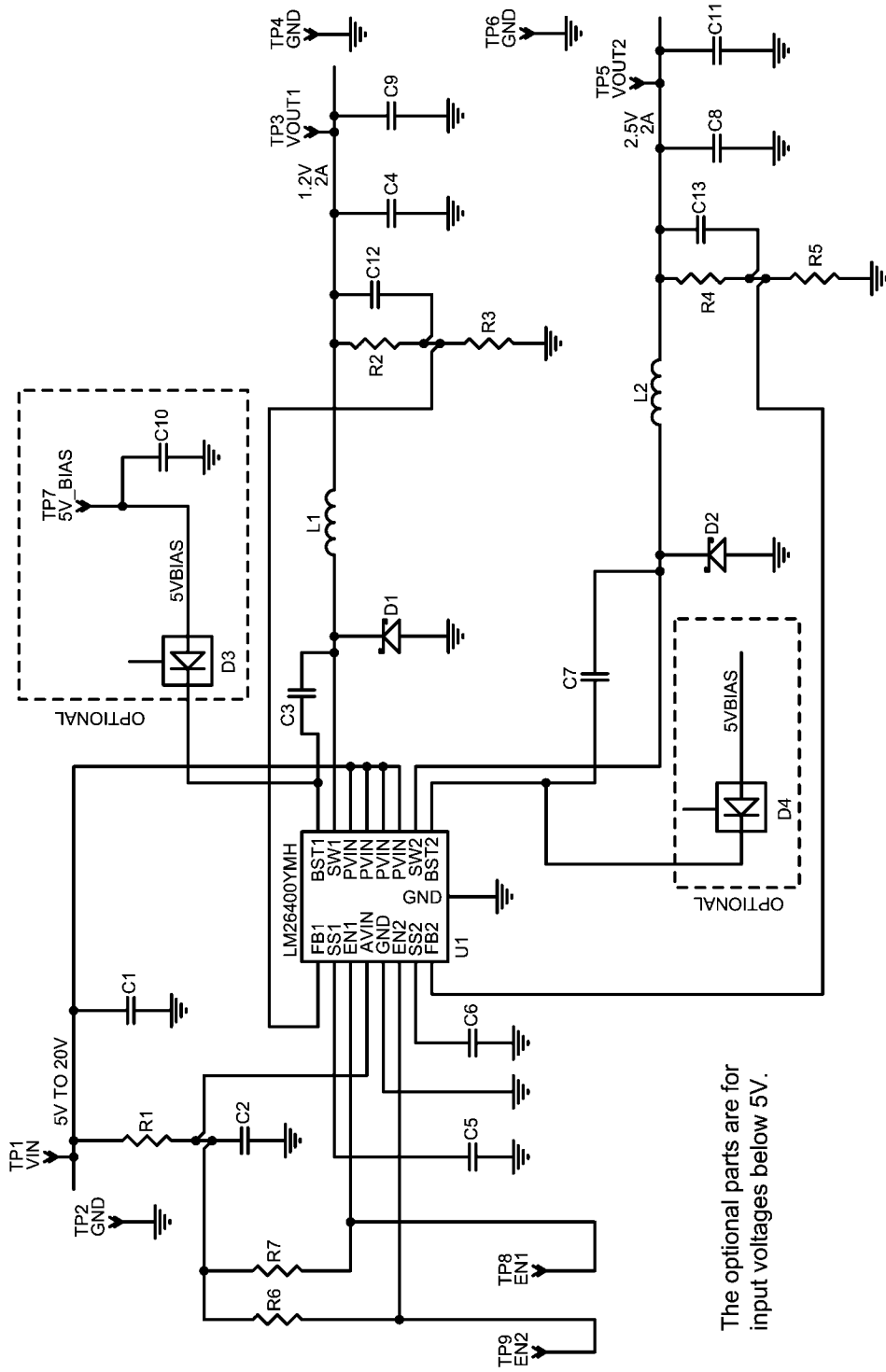
The linear soft-start ramps for the two output voltages should last about 1ms and 2ms. Load can be applied prior to power-up. If no load is applied, the two channels will operate in pulse skipping mode or discontinuous conduction mode. If an output is shorted either before or after start-up, removal of the short-circuit condition should bring the corresponding output back to normal voltage.

If additional output capacitors are desired, C8 and C9 on the back of the board are reserved for that purpose.

If it is desired to control the start-up and shutdown timing, connect the logic signals to the EN1 and/or EN2 pads on the back of the board. Make sure the voltages on the EN pads are never higher than VIN. If only a soft-start slope needs to be adjusted, simply change the corresponding SS capacitor (C5 or C6).

To operate between 3.3V and 5V of input voltage, populate D3 and D4 (on the back of the board) each with a SOT-23 Schottky diode such as the BAT54 and apply a 5V supply to the "5V_Bias" pad on the back. Do not exceed 6V on the 5V bias. The LM26400Y device itself can work with an input voltage as low as 3V. The demonstration board when using an external bootstrap bias can operate down to 3.3V under room temperature. This extra 0.3V requirement is due to the large duty cycle in the 2.5V channel being too close to the maximum allowed.

Board Schematic



The optional parts are for input voltages below 5V.

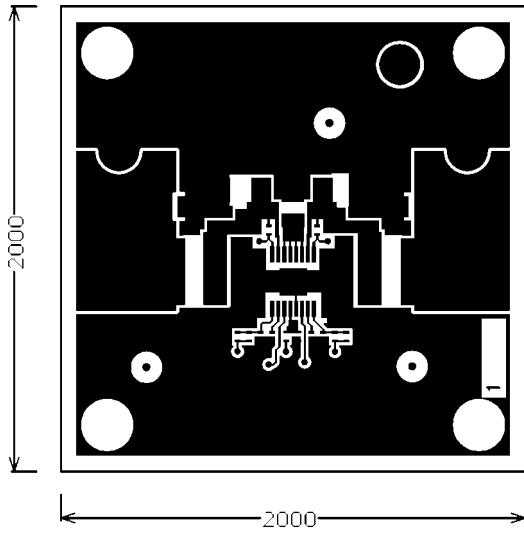
30012702

Bill of Materials

Item	Designator	Description	Manufacturer	Part No.	Qty.
1	C5, C6, C12, C13	0.022 μ F, 6.3V, X5R, 10%, 0402	Kemet	C0402C223K9PACTU	4
2	C2, C3, C7	0.1 μ F, 25V, X5R, 10%, 0402	Taiyo Yuden	TMK105BJ104KV-F	3
3	C1	10 μ F, 25V, X5R, 20%, 1210	Taiyo Yuden	TMK325BJ106MM-T	1
4	C11	47 μ F, 6.3V, X5R, 20%, 1210	Taiyo Yuden	JMK325BJ476MM-T	1
5	C4	100 μ F, 6.3V, X5R, 20%, 1210	Taiyo Yuden	JMK325BJ107MM-T	1
6	D1, D2	2A, 30V, SMB	IR	20BQ030TRPBF	2
7	L1	5 μ H, 2.2A, 23m Ω , 7x7x2.8mm ³	Sumida	CDRH6D26NP-5R0NC	1
8	L2	8.7 μ H, 2.2A, 25m Ω , 7x7x4mm ³	Sumida	CDRH6D38NP-8R7NC	1
9	R1	4.7 Ω , 1%, 0402	Vishay	CRCW04024R70FNED	1
10	R2, R3, R5	5.9k Ω , 1%, 0402	Vishay	CRCW040259R0FKED	3
11	R4, R6, R7	18.7k Ω , 1%, 0402	Vishay	CRCW0402187RFKED	3
12	TP1-TP6	0.094" Diameter Solder Terminal	Cambion	160-1026-02-01-00	6
13	U1	Dual 2A, 20V, 500kHz PWM Switcher, ETSSOP-16	National	LM26400YMH	1

PCB Layout

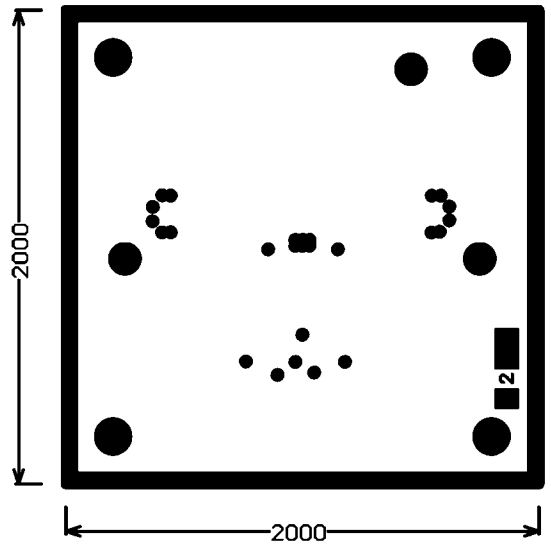
Top Copper



880013055-003 rev A

30012703

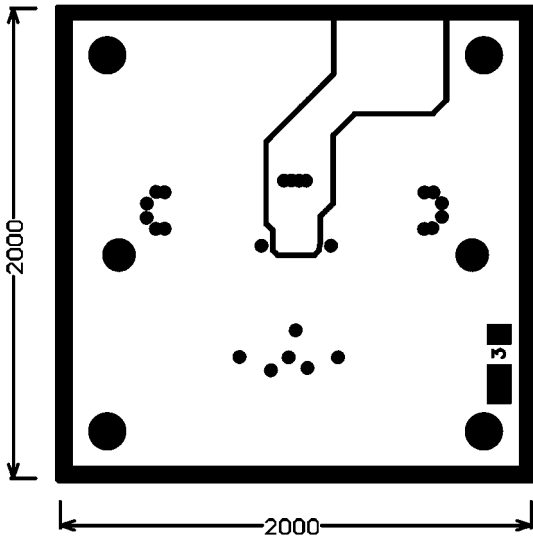
Ground Plane



880013055-003 rev A

30012704

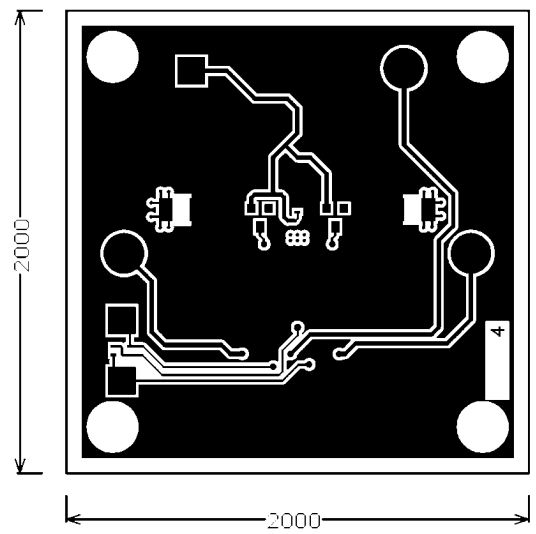
Power Plane



880013055-003 rev A

30012705

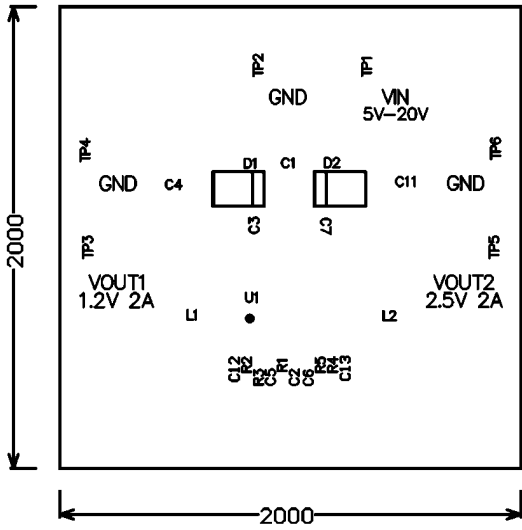
Bottom Copper



880013055-003 rev A

30012706

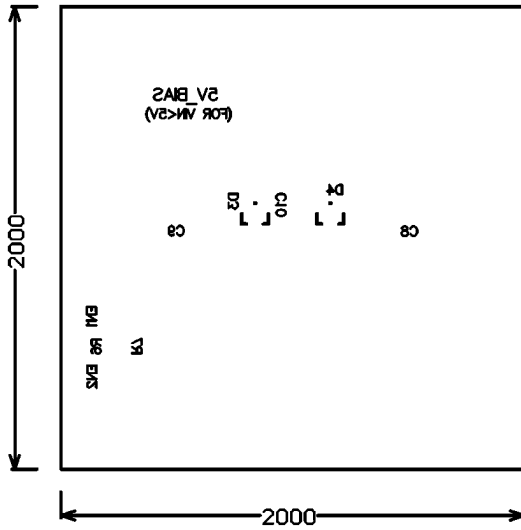
Top Silkscreen



880013055-003 rev A

30012707

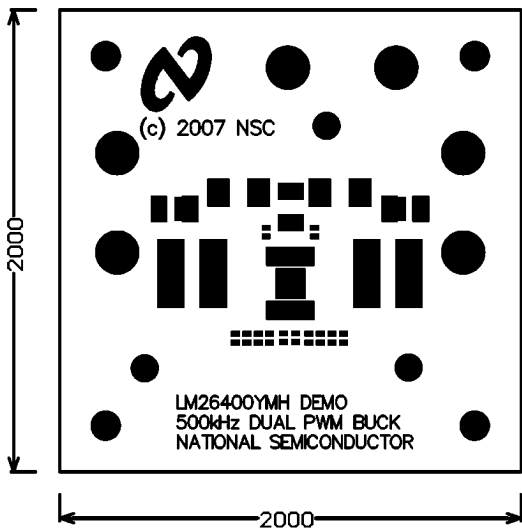
Bottom Silkscreen



880013055-003 rev A

30012708

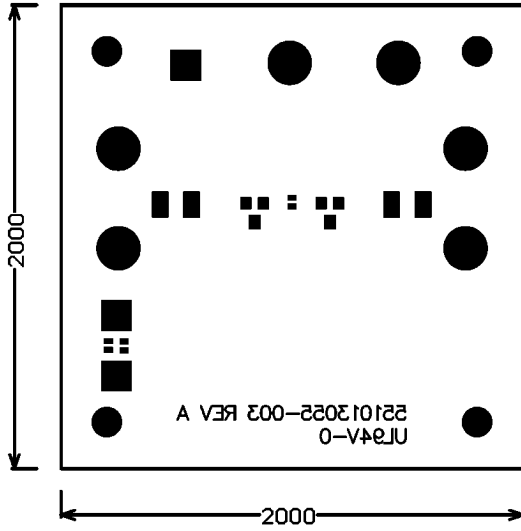
Top Soldermask



880013055-003 rev A

30012709

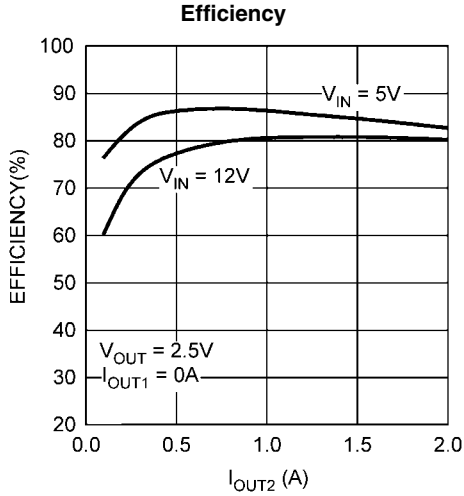
Bottom Soldermask



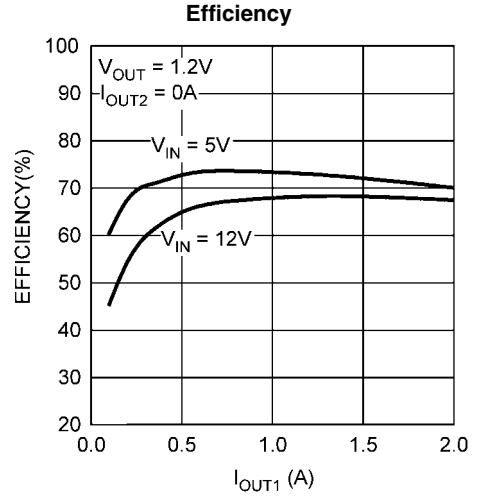
880013055-003 rev A

30012710

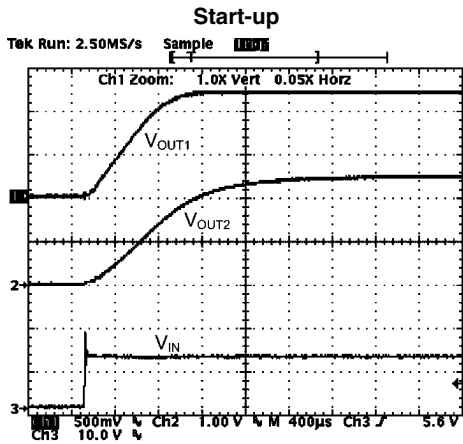
Typical Performance Characteristics



30012716

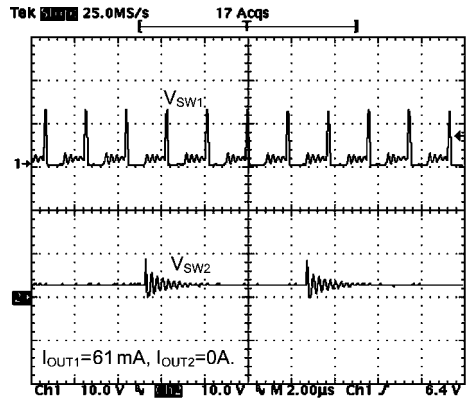


30012715



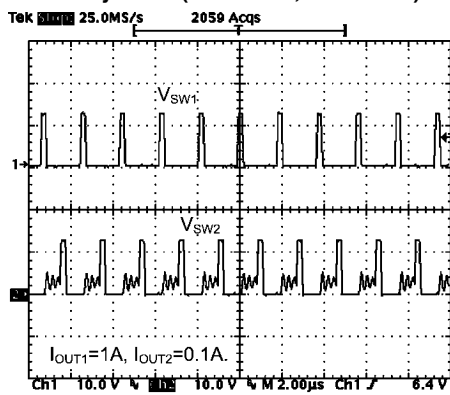
30012711

Steady State (Ch1=DCM, Ch2=Pulse Skipping)



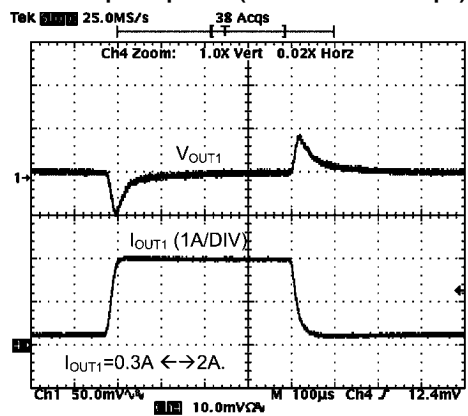
30012712

Steady State (Ch1=CCM, Ch2=DCM)



30012713

Load Step Response (slew rate = 0.25A/µs)



30012714

Notes

AN-1600

Notes

THE CONTENTS OF THIS DOCUMENT ARE PROVIDED IN CONNECTION WITH NATIONAL SEMICONDUCTOR CORPORATION ("NATIONAL") PRODUCTS. NATIONAL MAKES NO REPRESENTATIONS OR WARRANTIES WITH RESPECT TO THE ACCURACY OR COMPLETENESS OF THE CONTENTS OF THIS PUBLICATION AND RESERVES THE RIGHT TO MAKE CHANGES TO SPECIFICATIONS AND PRODUCT DESCRIPTIONS AT ANY TIME WITHOUT NOTICE. NO LICENSE, WHETHER EXPRESS, IMPLIED, ARISING BY ESTOPPEL OR OTHERWISE, TO ANY INTELLECTUAL PROPERTY RIGHTS IS GRANTED BY THIS DOCUMENT.

TESTING AND OTHER QUALITY CONTROLS ARE USED TO THE EXTENT NATIONAL DEEMS NECESSARY TO SUPPORT NATIONAL'S PRODUCT WARRANTY. EXCEPT WHERE MANDATED BY GOVERNMENT REQUIREMENTS, TESTING OF ALL PARAMETERS OF EACH PRODUCT IS NOT NECESSARILY PERFORMED. NATIONAL ASSUMES NO LIABILITY FOR APPLICATIONS ASSISTANCE OR BUYER PRODUCT DESIGN. BUYERS ARE RESPONSIBLE FOR THEIR PRODUCTS AND APPLICATIONS USING NATIONAL COMPONENTS. PRIOR TO USING OR DISTRIBUTING ANY PRODUCTS THAT INCLUDE NATIONAL COMPONENTS, BUYERS SHOULD PROVIDE ADEQUATE DESIGN, TESTING AND OPERATING SAFEGUARDS.

EXCEPT AS PROVIDED IN NATIONAL'S TERMS AND CONDITIONS OF SALE FOR SUCH PRODUCTS, NATIONAL ASSUMES NO LIABILITY WHATSOEVER, AND NATIONAL DISCLAIMS ANY EXPRESS OR IMPLIED WARRANTY RELATING TO THE SALE AND/OR USE OF NATIONAL PRODUCTS INCLUDING LIABILITY OR WARRANTIES RELATING TO FITNESS FOR A PARTICULAR PURPOSE, MERCHANTABILITY, OR INFRINGEMENT OF ANY PATENT, COPYRIGHT OR OTHER INTELLECTUAL PROPERTY RIGHT.

LIFE SUPPORT POLICY

NATIONAL'S PRODUCTS ARE NOT AUTHORIZED FOR USE AS CRITICAL COMPONENTS IN LIFE SUPPORT DEVICES OR SYSTEMS WITHOUT THE EXPRESS PRIOR WRITTEN APPROVAL OF THE CHIEF EXECUTIVE OFFICER AND GENERAL COUNSEL OF NATIONAL SEMICONDUCTOR CORPORATION. As used herein:

Life support devices or systems are devices which (a) are intended for surgical implant into the body, or (b) support or sustain life and whose failure to perform when properly used in accordance with instructions for use provided in the labeling can be reasonably expected to result in a significant injury to the user. A critical component is any component in a life support device or system whose failure to perform can be reasonably expected to cause the failure of the life support device or system or to affect its safety or effectiveness.

National Semiconductor and the National Semiconductor logo are registered trademarks of National Semiconductor Corporation. All other brand or product names may be trademarks or registered trademarks of their respective holders.

Copyright© 2007 National Semiconductor Corporation

For the most current product information visit us at www.national.com



National Semiconductor Americas Customer Support Center
 Email: new.feedback@nsc.com
 Tel: 1-800-272-9959

National Semiconductor Europe Customer Support Center
 Fax: +49 (0) 180-530-85-86
 Email: europe.support@nsc.com
 Deutsch Tel: +49 (0) 69 9508 6208
 English Tel: +49 (0) 870 24 0 2171
 Français Tel: +33 (0) 1 41 91 8790

National Semiconductor Asia Pacific Customer Support Center
 Email: ap.support@nsc.com

National Semiconductor Japan Customer Support Center
 Fax: 81-3-5639-7507
 Email: jpn.feedback@nsc.com
 Tel: 81-3-5639-7560